



Lancashire  
RFU

**LANCASHIRE**

**V**

**YORKSHIRE**

**BILL BEAUMONT CHAMPIONSHIP**

**FYLDE RFC**

**SATURDAY 9TH MAY 2026**

**KICK OFF 15:00**

**Lancashire County RFU**  
2025-2026

**President:**  
I Spivey

**Senior Vice President:**  
R Jones

**Vice President:**  
S Godfrey

**Chairman:**  
D Clarke

**Honorary Secretary:**  
M Downs

**Board of Directors:**  
CA Baker, K Bennetta,  
GA Burns MBE, D Clarke,  
AN Crabtree, P Deakin,  
M Downs, C Gaffey,  
H Hughes.

**County Champions:**  
1891, 1935, 1938, 1947,  
1948, 1949, 1955, 1969,  
1973, 1977, 1980, 1982,  
1988, 1990, 1992, 1993,  
2003, 2006, 2009, 2010,  
2011, 2013, 2014, 2017,  
2018.

**Womens County  
Champions:**  
2017, 2023

**U20 County Champions:**  
2025

**As Lancashire President for 2025–2026, it gives me great pleasure and pride to welcome you all to today’s game, which promises to be a fierce “Roses” contest.**

As someone who has been involved in this great game for many, many years, I have continued my participation within this grand County of Lancashire, to enable others to get the same enjoyment from Rugby that I have had.

A special mention should go to the Players, Coaches, Team Managers and Match Officials for their collective effort and commitment and I would especially like to extend my thanks to Fylde RFC, for hosting this County Championship match.

We all appreciate how much hard work and organisation goes into hosting fixtures like this, and we sincerely value the support of staff and volunteers in delivering rugby to the community.

Thank you to Yorkshire for making the journey over the Pennines today, we are all looking forward to a great game played with Teamwork, Respect, Enjoyment, Discipline and Sportsmanship.

**Ian Spivey**  
President  
Lancashire County RFU



## Welcome to today's Roses game at the Woodlands the home of Fylde RFC.

The Lancashire Yorkshire game is steeped in tradition but in the many contests between the old rivals I believe this format is a first. Effectively it is a modern day semi final, two legged, home and away, aggregate score, winner goes to the final at Twickenham ( I know it's the Allianz Stadium but we all know it is really still Twickers ). The Bill Beaumont Cup has four counties left standing, Lancashire and Yorkshire in the north and Kent and Cornwall in the south. Truth be told over the last decade they are the four prominent players in this competition and to be honest when you filter it all down, this format may stick in some peoples craw, but the truth is it focusses the lens on the best four teams in the country and gives them each the fairest chance possible of getting to the final.

There is a lot of excitement around our group as I'm sure there is with the Yorkshire squad about a home and away game and I hope the two matches live up to the billing. Who knows where this competition will be in the future , but to me this is an exciting opportunity for everyone involved in county rugby in our great red and white rose counties . So over the next two weeks let's celebrate the heritage and history of one of sport's great rivalries, played out over two games, a week apart, by the players who are the custodians of this great challenge between Lancashire and Yorkshire. I am sure it will be a great contest over the two legs. I hope you all enjoy today's game here on the Fylde coast and get behind the players on the pitch who after a long hard league season put their club allegiance aside and pull on the Red or White Rose and give of their best for their county.

One final message to the powers that be at the RFU who hold the future of the county championship in their gift . This is the last bastion of representative rugby left to players outside the full England side. When you make your decisions tread very softly because you tread on the dreams of many players and volunteers who are the heart and soul of Rugby Union in England, and the very last stand of the Corinthian spirit of our great game.

**Mark Nelson**  
Lancastrian



## U20 Match Action

The Lancashire U20s edged an end-to-end contest against Cheshire U20s at Lymm RFC with a tries from Archie Hamer, George Reay, Joe Donnelly, Cameron McIntyre, Charles Feeley, Taran Mathauda and conversions from Lewis Jeans to secure a 32-34 victory in the Jason Leonard U20 County Championship.

Images by PAC Photography ©







## HOME

Lancashire v Yorkshire  
Saturday 9th May 2026  
Fylde RFC  
KO 15:00



## AWAY

Yorkshire v Lancashire  
Saturday 16th May 2026  
Hull Ionians RFC  
KO 15:00





## LANCASHIRE

15	<b>Sam Freeman</b>	Preston Grasshoppers
14	<b>Jordan Dorrington</b>	Fylde
13	<b>Sam Russell</b>	Preston Grasshoppers
12	<b>Alex Clayton</b>	Fylde
11	<b>Leo Gililand</b>	Fylde
10	<b>Chris Johnson (C)</b>	Heath
9	<b>Matt Sturgess</b>	Sedgley Park
1	<b>Cory Bowker</b>	Fylde
2	<b>Jack Ellam</b>	Sedgley Park
3	<b>Daniel Rylance</b>	Sedgley Park
4	<b>Matt Garrod</b>	Fylde
5	<b>Ben Walton</b>	Fylde
6	<b>Isaac Deans</b>	Sedgley Park
7	<b>Ashton Kassam-Sharples</b>	Fylde
8	<b>Tom Ailes</b>	Preston Grasshoppers
16	<b>Freddie Deeks</b>	Fylde
17	<b>Sam Kyle-Clay</b>	Preston Grasshoppers
18	<b>Daniel Birchall</b>	Sale FC
19	<b>Hugo Castle</b>	Preston Grasshoppers
20	<b>Scott Rawlings</b>	Leek
21	<b>Owain Williams</b>	Preston Grasshoppers
22	<b>Jacob Browne</b>	Preston Grasshoppers
23	<b>Ben Gould</b>	Fylde

Head Coach **Alex Loney**  
Backs Coach **Scott Rawlings**  
Chair of Selectors **John Greenwood**  
Selector **Steve Briers**  
Rugby Coordinator **Mark Nelson**  
Club Liaison **Craig Steel**  
Kit Men **Roly Heptonstall, Jordan McClaughlin**  
Physio **Greg Littler, Molly Hart-Ryan**  
Manager **Guy Lovgreen**



## YORKSHIRE

15	<b>Will Baker</b>	Rotherham Titans
14	<b>Harry Jukes</b>	Sandal
13	<b>Oli Cicognini</b>	Wharfedale
12	<b>Ben Manderfield</b>	Sheffield Tigers
11	<b>James Norman</b>	Rotherham Titans
10	<b>James Watts</b>	Hull Ionians
9	<b>Noah Cowan</b>	Rotherham Titans
1	<b>Sam Dickinson</b>	Wharfedale
2	<b>Ben Stephenson</b>	Hull Ionians
3	<b>Calvin Mitchell</b>	Rotherham Titans
4	<b>Joe Makin (C)</b>	Hull Ionians
5	<b>James Harrison</b>	Sheffield Tigers
6	<b>Fraser Hastie</b>	Rotherham Titans
7	<b>Will Henshall (VC)</b>	Sandal
8	<b>Adam Brankley</b>	Hull Ionians
16	<b>Ben Crowe</b>	Sheffield Tigers
17	<b>Tom Wand</b>	Sheffield Tigers
18	<b>Tom Bairstow</b>	Rotherham Titans
19	<b>Alex Patrick</b>	Heath
20	<b>Alec Renouf</b>	Hull RUFC
21	<b>Kit Keith</b>	Leeds Tykes
22	<b>Ben Hyde</b>	Scunthorpe
23	<b>Ezra Hinchliffe</b>	Heath
TR	<b>Brad Viner</b>	Wharfedale
TR	<b>Harry Harrison</b>	Ilkley

Head Coach **Adam Byron**  
Forwards Coach **Glen Kenworthy**  
Backs Coach **Mal Holden**  
Manager **Benji Pickin**  
S & C **Louis Townsend**  
Physio **Rachel Galley**  
Sports Therapist **Jill Alexander**



# MADREFS

Thank you to the Manchester & District Rugby Union Referee Society and our Match Officials today:

**Referee: Peter Connor**

**AR1: Simon Park**

**AR2: Steve Halliday**

Please support our match officials this afternoon in their efforts to keep the game safe and fair. Rugby is a physical and passionate contest requiring discipline - which is why we love it - and we ask all players, coaches and spectators to respect and accept decisions gracefully, even when you disagree.



**WEAR YOUR ROSE WITH PRIDE  
NEW ONLINE STORE NOW OPEN**

[LINK](#)

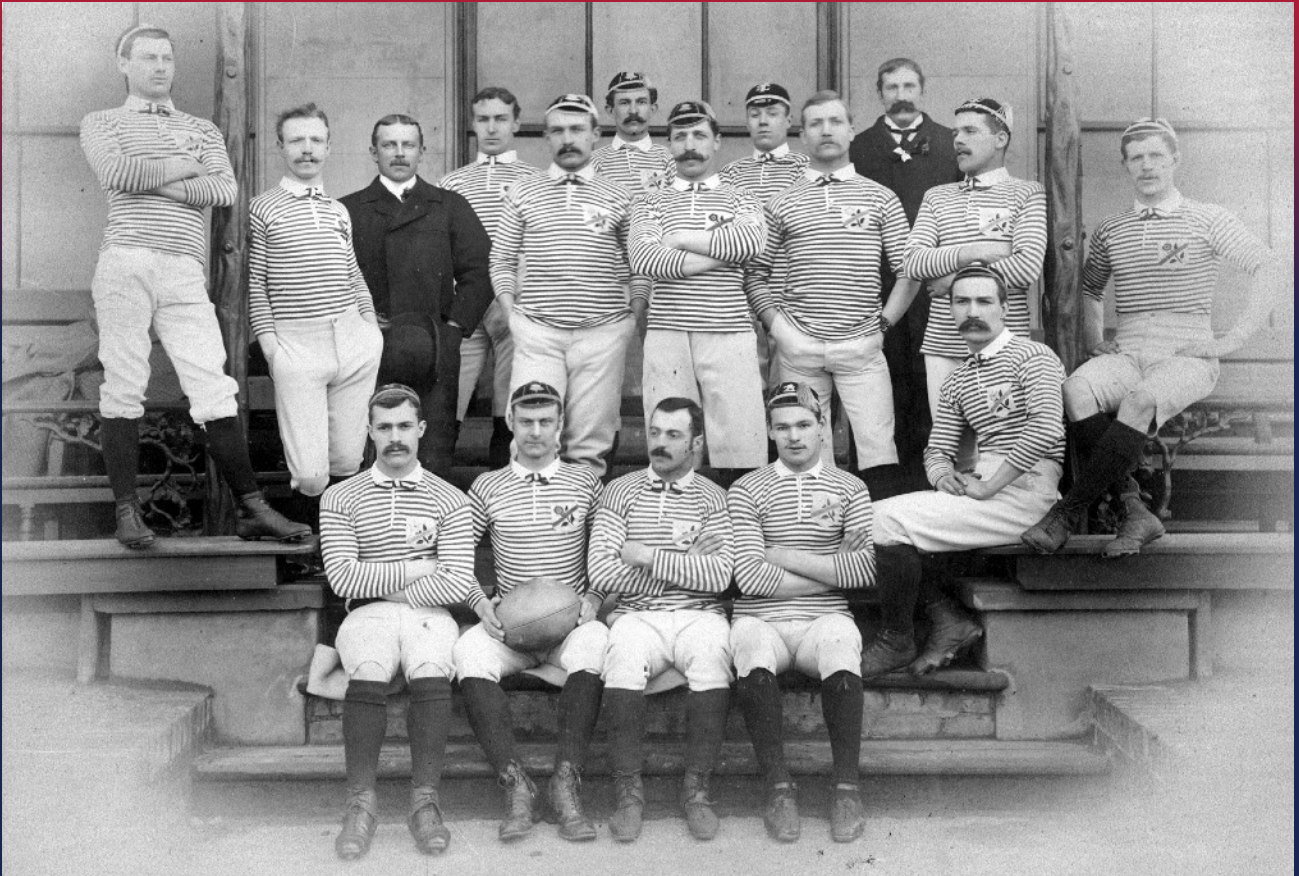


**The Battle of the Roses** (also known as **The Roses Match**) by William Barnes Wollen depicts a game between Lancashire and Yorkshire at a packed Fallowfield Stadium in Manchester, on 24 November 1894. Completed during 1895, with many of the players sitting for the artist, it was exhibited at the Royal Academy Summer Exhibition in 1896 and went on to be displayed in Huddersfield and Newcastle. In 1957 members of Yorkshire RFU found the painting in a second hand shop in Newcastle, bought it for £25 and displayed it in the clubhouse of Otley RUFC until the 1960s when it was moved to the President's Suite in the West Stand, Twickenham.

Restoration of the portrait revealed at least one player had been overpainted and erased from the scene. An initial theory suggesting that Wollen had removed players who had left Rugby Union in the 1895 Great Schism to join the Northern Rugby Football Union (later to become the Rugby Football League) was dismissed when it was pointed out if Wollen removed those who had switched codes there would only be a couple of players left in the picture!

An alternative interpretation proposes Wollen's painting is not only telling the story of the match but also reporting the context in which it was being played, with the ghost player removed in order to portray the gentleman in the far background, Mr George Rowland Hill, Secretary of the Rugby Football Union, as an isolated observer, left behind as the game moves forward.

Regardless of this conjecture, we can be certain of the foreground identity of Mr Alf Barraclough (Captain of Manningham, later to become Bradford City FC), the Yorkshire forward making the forward pass. 😊



Lancashire 1887



The John Burgess Lancashire Cup and Brian Leigh Lancashire Trophy, introduced in the 1893/94 season and still competed for today by Lancashire clubs.



# Lancashire RFU

In 1806 William Webb Ellis was born in Salford, Lancashire and in 1823 whilst a pupil at Rugby School legend has it he first caught the ball and ran with it, thereby defining the game that has since flourished around the world.

Long before Rugby Football had acquired commonly accepted laws Lancashire and Yorkshire were eager to compete with each other. From 1860 a Lancashire team played Yorkshire in an annual “Battle of the Roses” which was considered the blue ribbon of Northern Rugby.

Yorkshire formed a Union in 1869 and continued to play an invitational Lancashire side made up predominantly of players from the established clubs of Manchester and Liverpool. This all changed on the evening of 22nd December 1881 at the Albion Hotel, Manchester, when a meeting was convened of 16 invited clubs and the Lancashire County Rugby Football Union was formed.

Lancashire RFU now represents over 60 clubs and are proud to be 25 times English County Champions. Our unifying purpose is to bring people together to enjoy Rugby, so the game and its values flourish across the region. We do this by organising competitions, fielding representative teams and supporting our member clubs, schools and universities to grow and thrive.

To learn more about Lancashire RFU, or to volunteer your support, email [honsecretary@lancashirerfu.com](mailto:honsecretary@lancashirerfu.com), send us a message on social media @lancashirerfu, or visit our website.

**LANCASHIRERFU.COM**